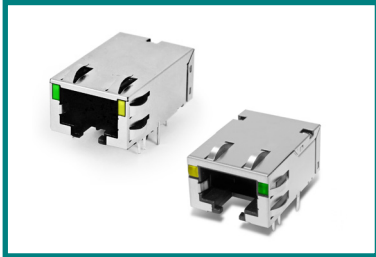


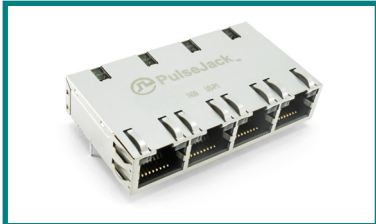
**JT3**  
Series  
1X1 10 Gigabit  
Offset, LED option,  
Tab-Down, Low Profile



**JT4/JTH**  
Series  
1X1 10 Gigabit  
PCI-E Compliant, Low Profile  
LED option, Tab-Down



**JT5**  
Series  
2XN 10 Gigabit  
Thru hole & Press Fit  
Pins, Light pipe



**JT6**  
Series  
1x4 10 Gigabit  
PoE/PoE+, LED option,  
Tab Up



**JT7**  
Series  
1X1 10 Gigabit  
PoE/PoE+ option  
LED option, Tab-Up



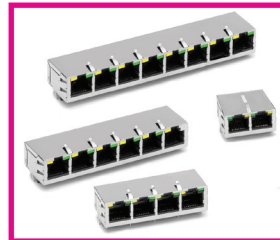
**J1N**  
Series  
1x4 Gigabit  
PoE/PoE+  
Low Profile  
LED option, Tab-Up



**JON**  
Series  
1x4 10 Gigabit  
PoE/PoE+ option  
LED option,  
Tab-Down



**JGL**  
Series  
1x2 Gigabit  
Low-Profile  
LED option,  
Tab-Up



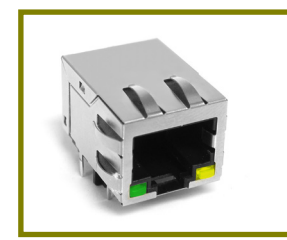
**JGO**  
Series  
1XN Gigabit  
LED option,  
Tab-Up



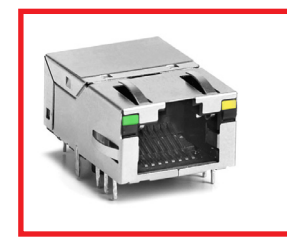
**J80**  
Series  
1XN 10/100  
LED option,  
Tab-Down



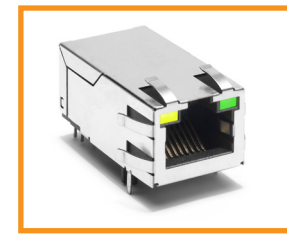
**JOB/JCO/  
J20**  
Series  
2XN 10/100 & Gigabit  
PoE/PoE+/UPoE Option  
LED option



**JKM**  
Series  
1x1 Gigabit  
Tab-Down  
LED option



**JOG**  
Series  
1X1 Gigabit  
Low Profile, Tab-Up  
LED option



**JKO**  
Series  
1X1 Gigabit  
PoE/PoE+ option  
LED option, Tab-Up



**J00/J10  
JV0/J30**  
10/100  
THT/SMT option  
Tab-Up/Tab-Down  
LED option